

# Carbon Black.

## CB DEFENSE ON THE PSC

### Next-Generation Antivirus + Endpoint Detection and Response

CB Defense is an industry-leading next-generation antivirus (NGAV) and endpoint detection and response (EDR) solution. CB Defense is delivered through the CB Predictive Security Cloud, an endpoint protection platform that consolidates security in the cloud using a single agent, console and data set.

CB Defense is certified to replace AV and designed to deliver the best endpoint security with the least amount of administrative effort. It protects against the full spectrum of modern cyber attacks, including the ability to detect and prevent both known and unknown attacks.

CB Defense leverages the powerful capabilities of the CB Predictive Security Cloud, applying our unique streaming analytics to unfiltered endpoint data in order to predict, detect, prevent, respond to and remediate cyber threats.

In addition, CB Defense provides a suite of response and remediation tools, including Live Response, which allows security personnel to perform remote live investigations, intervene with ongoing attacks and instantly remediate endpoint threats. For peace of mind, CB Defense customers can also leverage CB ThreatSight, Carbon Black's managed threat alert service, to validate alerts and uncover new threats.

CB Defense is available through MSSPs or directly as software as a service.

**“Moving to the cloud became a must for us at Hologic.  
CB Defense gave us proactive, real-time visibility into threats.  
It alerted us to a lot of things traditional AV did not see, and  
prioritized those alerts so we know what to focus on.  
You need full visibility into historical data to investigate  
if needed, and get rules in place to avoid it happening again.”**

**— RYAN MANNI, MANAGER, SECURITY OPERATIONS, HOLOGIC**

#### USE CASES

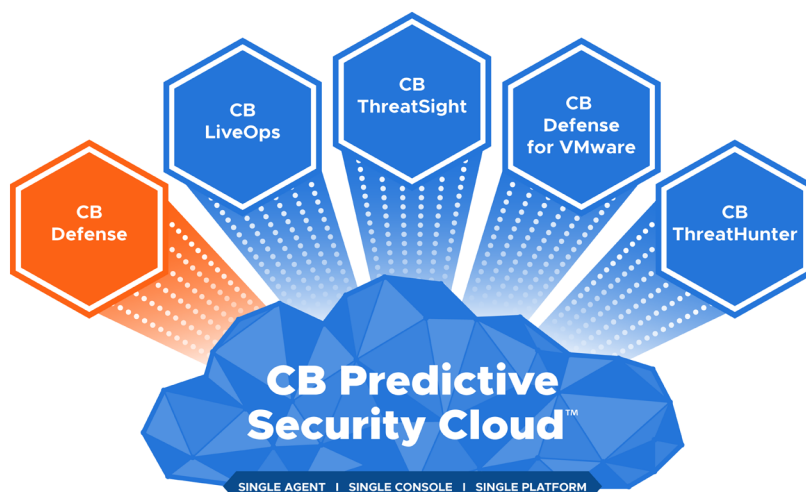
- Replace and extend traditional AV
- Consolidate multiple endpoint agents into one
- Move endpoint security to the cloud

#### BENEFITS

- Improved protection from known and unknown attacks
- Full visibility into endpoints to close security gaps
- Clear alerts and prioritization of potential threats
- Easier investigation into security incidents
- Faster mean time to resolution (MTTR)
- Simplified operations; no infrastructure required

#### CB DEFENSE AND THE PSC

- Next-gen endpoint security delivered from the cloud
- Single consolidated agent, single unified console
- Predictive prevention driven by unfiltered data and streaming analytics



# Carbon Black.

## Key Capabilities

### Single Agent, Cloud Platform

CB Defense is delivered through the CB Predictive Security Cloud, an endpoint protection platform that consolidates security in the cloud using a single agent, console and dataset.

### Streaming Prevention with Minimal False Positives

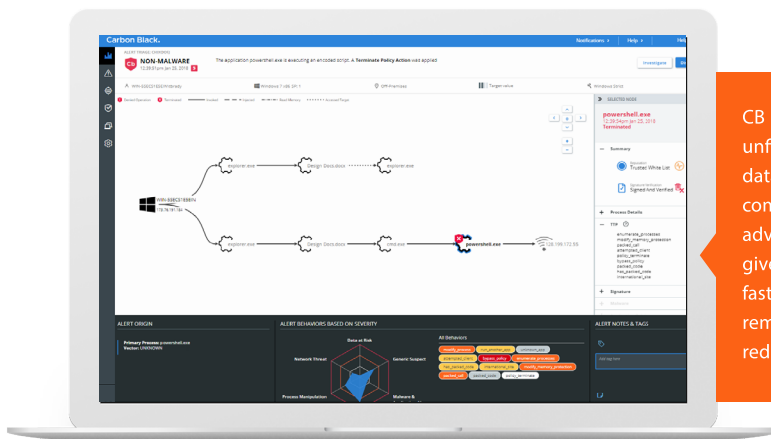
CB Defense's unique, data-driven prevention technology is certified to replace AV, using predictive modeling that identifies and stops more known and unknown threats including malware, fileless attacks, and ransomware. This technology eliminates the black magic typically associated with machine learning, minimizing misses and false positives.

### Complete Endpoint Visibility

CB Defense gives you a clear, comprehensive picture of endpoint activity using unfiltered, tagged data that allows you to easily search and investigate endpoints, follow the stages of an attack, and identify root cause so you can close security gaps.

### Improved Efficiency Between Security & IT Ops

CB Defense breaks down the walls between IT Operations and Security with simple workflows and built-in tools for live incident response, real-time investigations, and team collaboration. In addition, flexible policy configurations allow you to explicitly tailor your prevention, keeping users happy without compromising security.



CB Defense uses unfiltered endpoint data to provide complete visibility into advanced attacks and gives administrators the fastest way to remotely remediate endpoints to reduce downtime.

## FEATURES

- Signatures and cloud-based reputation to stop malware
- Streaming prevention to stop advanced fileless attacks
- Online and offline prevention
- Flexible prevention policies
- Customizable executive dashboard
- Interactive attack chain visualization
- Live Response: real-time threat remediation
- PCI and HIPAA compliant
- Open APIs integrate with your security stack

## PLATFORMS

- Windows: Windows 7/8/10
- Mac OS X: 10.6.8+
- Servers: Windows 2008 R2  
Windows 2012  
Windows 2012 R2  
Windows 2016  
Windows 2019

## REQUEST A DEMO

Contact us today to schedule a demonstration.

[sales@knowall.net](mailto:sales@knowall.net)  
020 7471 3270

## ABOUT CARBON BLACK

Carbon Black (NASDAQ: CBLK) is a leading provider of next-generation endpoint security delivered via the cloud. Leveraging its big data and analytics cloud platform – the CB Predictive Security Cloud – Carbon Black consolidates prevention, detection, response, threat hunting and managed services into a single platform with a single agent and single console, making it easier for organizations to consolidate security stacks and achieve better protection. As a cybersecurity innovator, Carbon Black has pioneered multiple endpoint security categories, including application control, endpoint detection and response (EDR), and next-generation antivirus (NGAV) enabling customers to defend against the most advanced threats. More than 4,300 global customers, including 35 of the Fortune 100, trust Carbon Black to keep their organizations safe.

Carbon Black and CB Predictive Security Cloud are registered trademarks or trademarks of Carbon Black, Inc. in the United States and other jurisdictions.

**KNOWALL**  
PRIVATE CLOUD COMPUTING

18 Spring Street, London, W2 3RA  
020 7471 3270  
[support@knowall.net](mailto:support@knowall.net)

[knowall.net](http://knowall.net)